

Pyhäjärvi Energy Storage in Mine Event



Hilton Helsinki Airport 5.4.2018

Henrik Kiviniemi, town manager

Pyhäjärvi in a nutshell



MINE FOR BUSINESS
CALLIO
PYHÄJÄRVI, FINLAND

- Town (municipality) in the centre of Finland, distance to Oulu 165 km, to Helsinki 445 km.
- 5400 residents, in the summer time ca. 8000. Popular summer cottage area.
- Long history as a mining town, identity has evolved as such.
- Biggest private employer is Pyhäsalmi Mine Ltd, ore is running out in 2019.
- Anticipated structural change (in Finnish ERM) ongoing. Special status applied 12/2017.



Mine closure and its impact on the town of Pyhäjärvi

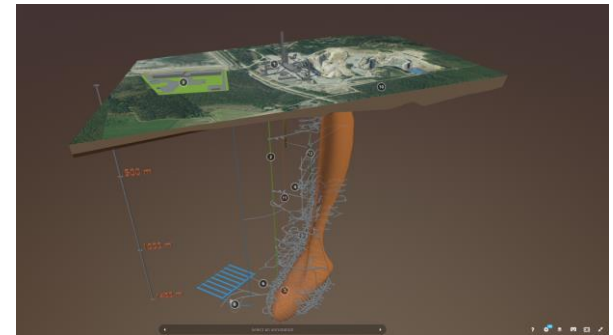
- Economy based heavily on industrial and logistical jobs (mining industry).
- Estimated job losses are ca. 400 jobs locally, in Finland ca. 800 jobs (inc. indirect losses).
- Income tax losses are ca. 1,6 M € (ca. 8 % of the whole tax revenue). Indirect losses ca. 3 M € (ca. 14 %). These are minimum figures.
- Corporate tax revenue (2017) ca. 5,1 M € (about 25 % of the entire town's tax revenue).
- Subcontractors are often quite small local companies → competitiveness is a big challenge.



Strengths and opportunities:

- Unique underground infrastructure. The market of underground versatile business facilities is booming.
- Great capacity to modify and expand existing infra.
- Underground service-cluster, a lot of specialized know how. Well trained miners and auxiliary staff.
- Overall infrastructure of the mine area, e.g. railway-connection.
- Large and multidisciplinary cooperation network exists already.

MINE FOR BUSINESS
CALLIO
PYHÄJÄRVI, FINLAND



Infra 3D-model:
www.callio.info

MINE FOR BUSINESS
CALLIO
PYHÄJÄRVI, FINLAND

MINE FOR BUSINESS
CALLIO
PYHÄJÄRVI, FINLAND

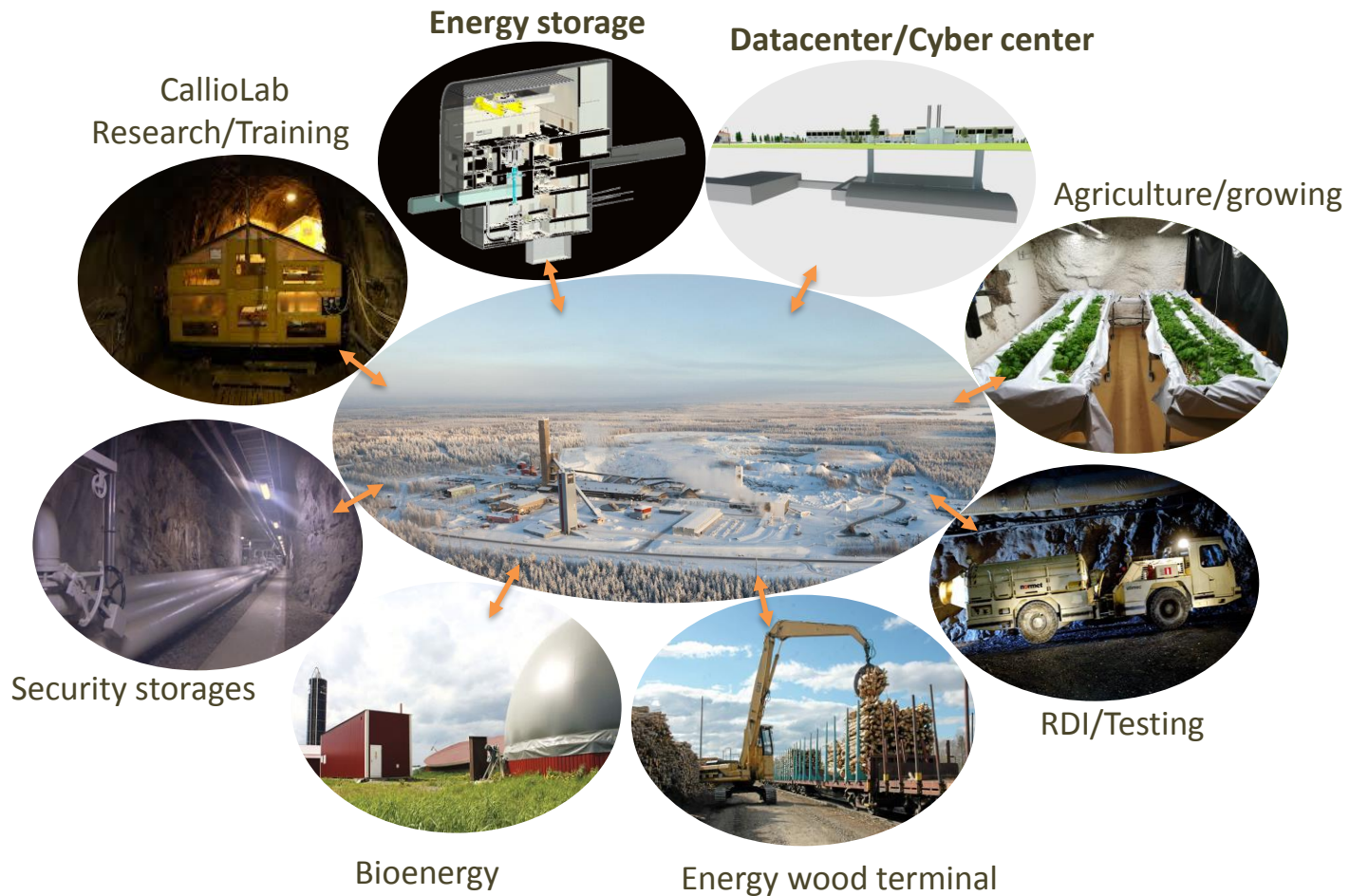


- www.callio.info
- www.calliolab.com

CALLIO Business Concept

Two key projects – energy storage and data center

MINE FOR BUSINESS
CALLIO
PYHÄJÄRVI, FINLAND



MINE FOR BUSINESS
CALLIO
PYHÄJÄRVI, FINLAND

Welcome!

